



Three Ways to Prevent Catastrophic TEE Failures

1. Perform frequent quality visual inspections

- When removed from storage
- When set-up and connected to the scanner
- Before insertion
- During removal
- After removal
- During pre-cleaning
- Before high level disinfection
- After high level disinfection
- Before storing

If a visual deficiency is found, **DO NOT** use the probe, **DO NOT** perform a leakage test, and **DO NOT** high level disinfect the probe. Disinfect the probe with a disinfectant wipe and remove it from service. See *Visual Inspection Guide* on reverse side.

2. Perform leakage testing at the appropriate time

- Timing

After **EVERY** patient exam, **FOLLOWING** a thorough visual inspection under magnification, and **PRIOR** to high level disinfection

- Deviate from the normal process

If the leakage test fails, **IMMEDIATELY** remove the probe from the test liquid. **DO NOT** high level disinfect the probe. Disinfect the probe with a disinfectant wipe and remove it from service.

3. Establish a TEE preventive maintenance program

- Address the wearable items on your probe before they lead to more severe problems
- Benchmark your probe against Innovatus Imaging acceptance criteria and 20-point physical and functional performance tests
- Learn more at innovatusimaging.com/safetee
- Approximate intervals
 - Bending rubber replacement - every 6-9 months
 - Articulation adjustment - every 6-12 months



NSF-ISR

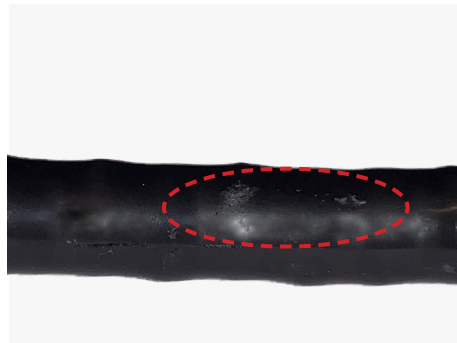
Registered to ISO 13485

Transesophageal (TEE) Probe Visual Inspection Guide

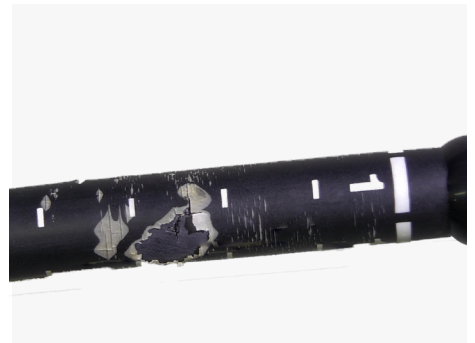
Always refer to the OEM user and service manuals before servicing equipment



Cracked Distal Tip



Worn Bending Rubber



Damaged Insertion Tube



Damaged Lens



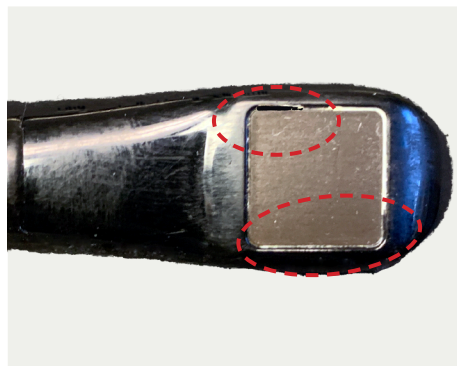
Crushed/Dented Insertion Tube



Cut/Damaged Bending Rubber



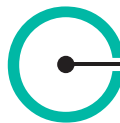
Bent/Damaged Pin



Missing Lens Seals



Damaged Collars/Seals



INNOVATUS IMAGING
575 Epsilon Drive • Pittsburgh, PA 15238
www.innovatusimaging.com

CUSTOMER CARE/ORDERS
1-844-687-5100
customercare@innovatusimaging.com