



Achieving Excellence Ultrasound Probe Performance

1. Perform Frequent Quality Visual Inspection

Acoustic Lens:

- Punctures/Perforations
Delaying attention to minor deficiencies in the acoustic lens could lead to more costly repairs at a later date.
- Delamination
Air and/or other materials can become trapped between the acoustic array and the lens causing degradation of image quality.

Array Housing:

- Cracks or Worn/Open Seams
May permit entry of cleaning fluids leading to catastrophic electro-mechanical failures.

2. Perform Weekly Visual Inspections

Encourage end-users to perform weekly detailed visual inspections of their probes to identify minor deficiencies. (See Visual Inspection Guide on reverse side)

3. Assess Image Quality

A tissue-mimicking phantom should always be used to verify image quality.

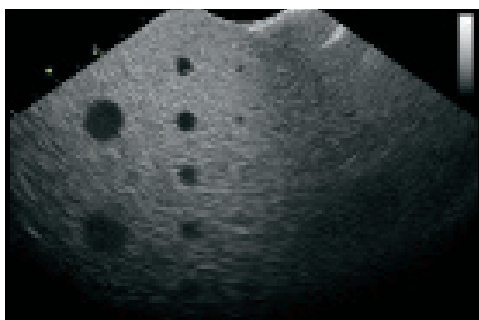


Image Shadowing

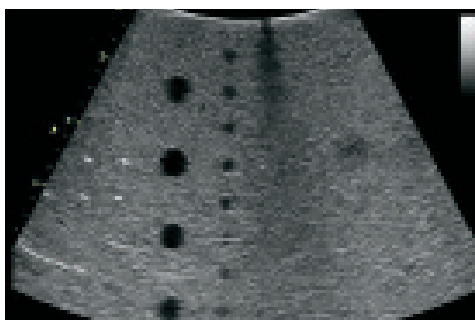


Image Dropout

Standard Probe Visual Inspection Guide

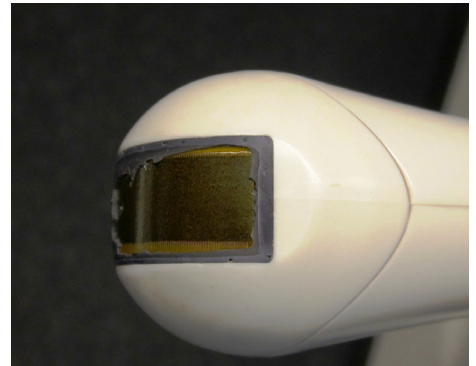
Always refer to the OEM manuals for proper cleaning and handling procedures



Damaged Acoustic Lens



Worn Acoustic Lens



Missing Acoustic Lens



Cracked Probe Housing



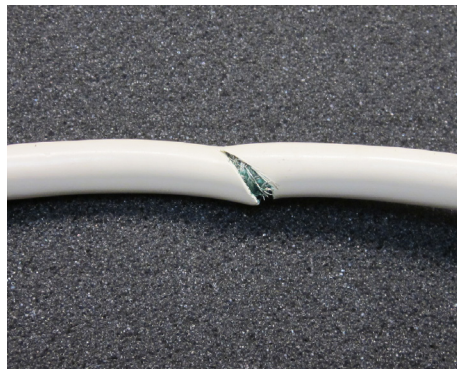
Gel Intrusion/Cross Contamination



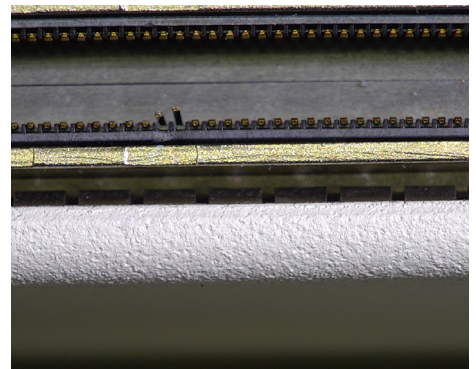
Open Seams on Probe Housing



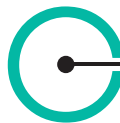
Damaged Strain Relief



Cut Cable



Damaged Pin Bank



INNOVATUS IMAGING
575 Epsilon Drive • Pittsburgh, PA 15238
www.innovatusimaging.com

CUSTOMER CARE/ORDERS
1-844-687-5100
customercare@innovatusimaging.com