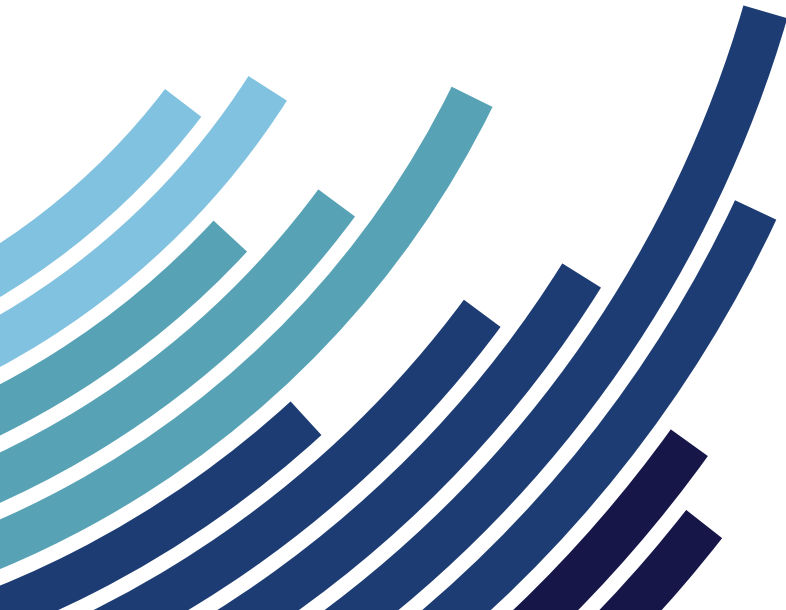




Simple. Efficient. Versatile.

MVi-DR
Digital Radiography Solutions



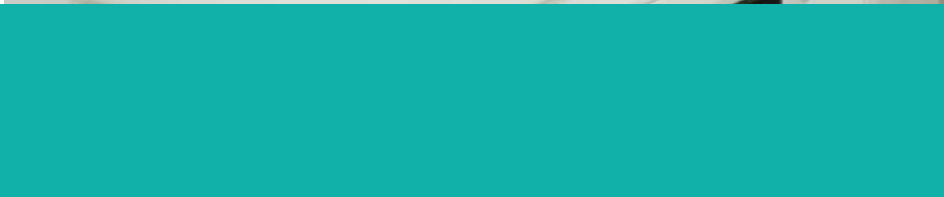
SEE BEYOND

Optimize Your X-ray Workflow

with MVi-DR Digital Radiology Solutions

The MVi-DR upgrade solution is designed to seamlessly integrate and convert your conventional x-ray room or portable unit into a digital radiography system. Powered by MVi-DR software, this offering provides you with the means to optimize your radiology unit through efficiency, simplicity and versatility.





Simple

- Focus on the task at hand, with the simplicity of the MVi-DR digital upgrade solution.

Versatile

- The versatility of MVi-DR adapts to the unique needs of your imaging department and allows you to convert any OEM x-ray room or portable system.

Efficient

- MVi-DR assists with optimizing workflow so you may experience enhanced efficiency and patient throughput.
- Initial preview of image available in less than 5 seconds.
- Fast acquisition time can lead to reduced study time and increased throughput.



Optimize your workflow today.

1-844-687-5100 Option4

Product Specifications	14" x 17" Wireless Detector
Mechanical	
Size	ISO 4090 for 35 cm x 43 cm (14" x 17") cassette size
Active Area	352 mm x 429 mm
External Dimensions	384 mm (w) x 460 mm (l) x 15.5 mm (h)
Weight	3.1 kg (6.8 lbs)
Housing	Aluminum frame with carbon-fiber entrance window
Sensor	
Panel	Amorphous silicon active TFT-diode array
Scintillator	Direct deposition CsI:TI
Pixel Matrix	3524 x 4288
Pixel Pitch	100 µm
Electronics	
Amplifiers	Low noise ASICs with user selectable gains
ADC	16 bit
Image Transfer Time	Wired: 500 ms; Wireless: 3000 ms
On-board Memory	1 GB DDR3, 8 GB SDHC card
Communications	
Status Display	OLED display with WiFi, LAN, battery, and sensor indicators
Wireless Data I/F	802.11n WiFi standard at 5 GHz
Wired Data I/F	GigE, trigger and power via optional docking connector
X-ray I/F	Integrated X-ray trigger control Automatic Exposure Detection
Imaging Performance	
Typical DQE	75% (0 cy/mm), 60% (1 cy/mm), 40% (3 cy/mm) for RQA5
Typical MTF	70% (1 cy/mm), 40% (2 cy/mm), 15% (4 cy/mm) for RQA5
Limiting Resolution	5 lp/mm
Advanced Features	
Dynamic Mode	8 fps at 200 µm resolution
On-board Corrections	Offset, gain and defective pixel
On-board Storage	Image storage with tagging
Binning Capable	2 x 2 binning for 200µm
Environmental	
Temperature	10 °C to 35 °C operating
Humidity	10% to 85% operating
Ingress Protection	IPX4 rated (protection against splashing water)
Accessories	
Battery	Rechargeable lithium battery, 11.1 V
Battery Charger	External 2 bay charger 100 - 240 V AC 50/60 Hz
Interface and Power Unit	Optional IPU-2 external power supply 100 - 240 V AC, GigE, and X-ray I/F
Regulatory	
Standards	EN 60601-1:2006/AC:2010, EN 60601-1-2:2007, FCC part 2 subpart J, FCC part 15 subpart B/C/E, ETSI EN 301 893 V.1.7.1 (2012), ETSI EN 301 489-1 V1.9.2 (2011), ETSI EN 301 489-17 V2.2.1 (2012), EN ISO 10993-5:2009, EN ISO 10993-10:2010

Hardware Accessories Available from Innovatus Imaging

Protection
Weight-bearing Case
Protective Case
Protective Case with Grid
Mobile Work Station
Surface Pro-Tablet*
Protective Case*
Touchscreen Desktop Monitor
Docking Station
Keyboard & Mouse

*Standard Equipment



INNOVATUS IMAGING
575 Epsilon Drive • Pittsburgh, PA 15238
www.innovatusimaging.com

CUSTOMER CARE/ORDERS
1-844-687-5100
customer@innovatusimaging.com